



# HORIZON COLLECTION



# Outdura

# HOSPITALITY COLLECTION

## OUTDURA - THE BRAND

Outdura's® success story began more than twelve years ago. With high quality standards and know how, the brand based in North Carolina has developed itself to be what it is today: one of the leading suppliers of outdoor upholstery fabrics.

Offering the latest in colors and original designs for today's lifestyles, Outdura fabrics boast a strong performance story that is suitable for most any fabric application. And, unlike so many of today's textile products, every yard of Outdura performance fabric is woven right here in the USA.

## DESIGN

Outdura has created its own, unique personality in the outdoor world through color, construction and design work. By coupling an extensive toolbox with our design team's talent, Outdura has created an image in the industry that is well placed and well received by core customers and retailers.

## SUSTAINABILITY

Outdura® fabrics are certified by the Öko-Tex Label. The OEKO-TEX® Standard 100 is a global testing and certification system for textile raw materials, intermediates and end products at all stages in processing. The slogan „Confidence in textiles“ stands worldwide for responsible textile production, safety and transparency.



## FEATURES

Outdura fabrics are made of 100% Solution Dyed Acrylic yarn which gives you unprecedented performance characteristics including:

- Ultra High UV to Resist Fading
- Stain and Mildew Resistant
- Water Resistant Breathable
- Bleach Cleanable/Machine Washable
- High Abrasion Resistance
- 5 Year Warranty
- 100% American Made
- Cut yardage and full roll programs are available.
- Additional treatment options available include Crypton, enhanced flame resistance and acrylic backing.

Application of these finishes/backings can add 3-4 weeks to the delivery time.

## THE GROUP

Outdura® is a brand of the Sattler Group.

Sattler AG, headquartered in Graz, Austria, is a fifth generation, family owned company engaged in the manufacturing of fabrics for awning, marine, transportation, industrial applications, tents and tensile structures as well as biogas containment.

The Sattler Group ranks among the top European manufacturers and is a leading producer of solution dyed acrylic fabrics worldwide. Textiles made by Sattler can be found in all areas where material and fabric must meet the highest requirements in function, reliability, durability and ecological responsibility. Due to specialization and a solid background in research and application technology, the Sattler group can provide solutions for all customer requirements.

# Horizon Collection

**Horizon** is a collection designed to provide ultimate performance and comfort required for any environment, contract to residential, indoor to outdoor and offers a broad variety of fresh tones, interesting textures, exquisitely designed jacquards, along with an array of solids and stripes. These fabrics are made from 100 % solution-dyed acrylic yarn which ensures outstanding technical properties allowing for superior fade resistance even after heavy cleaning. Outdura fabrics are exceptionally durable, easy to clean, even bleach cleanable and tested for abrasion resistance to meet and exceed our customer's expectations.

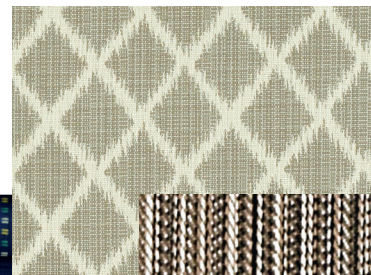
IMPRESSIONS

SALON/LINEAR

CONTOUR

Outdura's performance fabrics are perfect for any installation in any market or any application. Our award-winning design team lets you decorate and accessorize your indoor and outdoor spaces with no holds barred. From simple to classic to cutting-edge, look no further than Outdura for fabrics with on-trend patterns, vibrant colors and innovative textures, all woven in America!

Choose from a wide array of solids, dobbies, novelty textures and jacquards featured in our current collection.



# Horizon Collection

## IMPRESSIONS



The „Impressions“ design line includes 7 very striking jacquards, each available in various color variations.

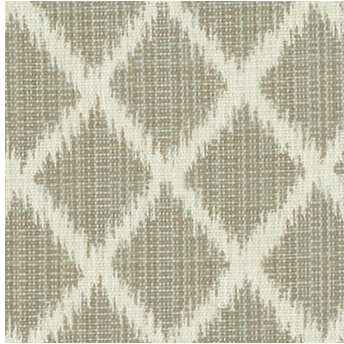
---

Applications: Indoor and outdoor upholstery, umbrellas, cushions, pillows

- Ultra High UV to Resist Fading
- Stain and Mildew Resistant
- Water Resistant Breathable
- Bleach Cleanable/Machine Washable
- High Abrasion Resistance
- 5 Year Warranty
- 100% American Made
- Content: 100% Solution Dyed Acrylic
- Width: 54" Wide
- Abrasion: 30,000+ to 60,000+
- Flammability: Cal. 117 Sec. 1 Class 1, Pass, NFPA 260 Class 1, Pass, IMO 8.2, Pass
- Cleaning Code: WS Bleach Cleanable

# IMPRESSIONS

Lavalier | Fossil 6551



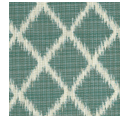
Apricot 6555



Bamboo 6556



Ocean 6552



Bondi | Parakeet 6577



Beach 6575



Greystone 6576



Surf 6578



Citrus 6580



Elements | Burlap 2122



Ecru 2121



Chili 2120



Jungle 2127



Nickel 2123



Carbon 2124



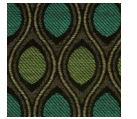
Ashton | Burl 4475



Mango 4476



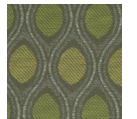
Amazon 4477



Hazelnut 4478



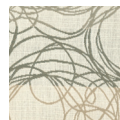
Patina 4480



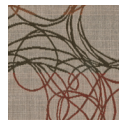
Boomerang | Lagoon 7175



Grain 7176



Burnish 7178



Granite 7177



Meadow 7179



Mingle | Dune 4775



Sisal 4776



Pebble 4777



Melon 4778



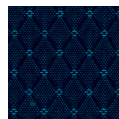
Trellis | Sandstone 5553



Bone 5560



Sailor 5557



# Horizon Collection

## SALON/LINEAR

*(Leonardo da Vinci)  
Simplicity is the ultimate sophistication"*



The Salon/Linear design line features plain weave stripes and solids in an assortment of colors.

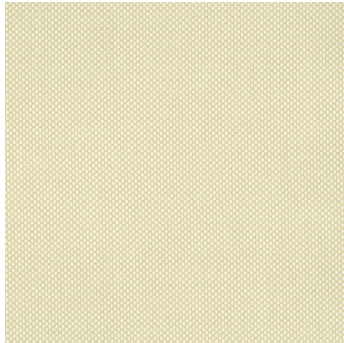
---

Applications: Indoor and outdoor upholstery, umbrellas, cushions, pillows

- Ultra High UV to Resist Fading
- Stain and Mildew Resistant
- Water Resistant Breathable
- Bleach Cleanable/Machine Washable
- High Abrasion Resistance
- 5 Year Warranty
- 100% American Made
- Content: 100% Solution Dyed Acrylic
- Width: 54" Wide
- Abrasion: 30,000+ to 60,000+
- Flammability: Cal. 117 Sec. 1 Class 1, Pass, NFPA 260 Class 1, Pass, IMO 8.2, Pass
- Cleaning Code: WS Bleach Cleanable

# SALON

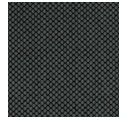
## Crew | Chablis 5677



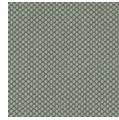
Khaki 5678



Carbon 5680



Silver 5681



Clay 5683



Peacock 5686



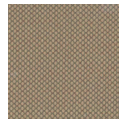
Blueberry 5687



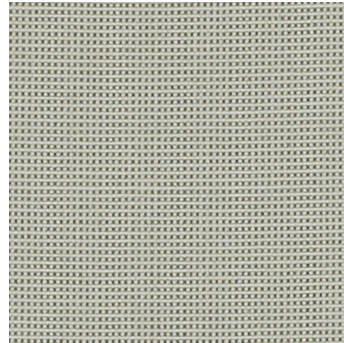
Chino 5688



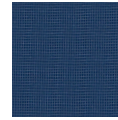
Mushroom 5689



## Sparkle | Dove 1730



Skipper 1704



Jute 1718



Pottery 1714



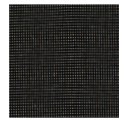
Granite 1711



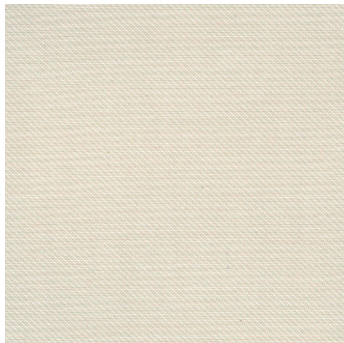
Cork 1720



Mica 1710



## Macoy | Eggschell 4675



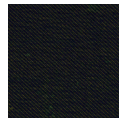
Khaki 4676



Walnut 4677



Chocolate 4679



Pewter 4680



Celery 4681



Seaglass 4682



Pool 4683



Apricot 4684



Poppy 4685



## Memo | Oats 520



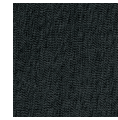
Flax 521



Hemp 522



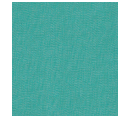
Charcoal 526



Barley 527



Laguna 528



# LINEAR

## Fenway | Flannel 1513



Putty 1511



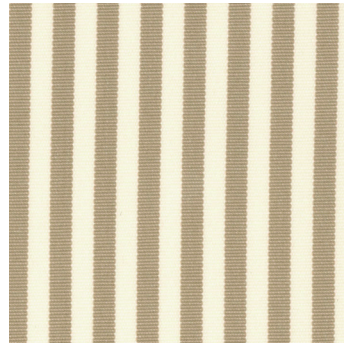
Laguna 1512



Coal 1510



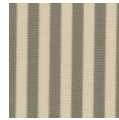
## Longitude | Beach 7850



Coffee 7851



Hemp 7858



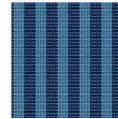
Leaf 7852



Mica 7856



Sailor 7861



# Horizon Collection

## CONTOUR

*Changing interior environments into captivating spaces.*



: The Contour design line are great small scale patterns that can be used anywhere.

---

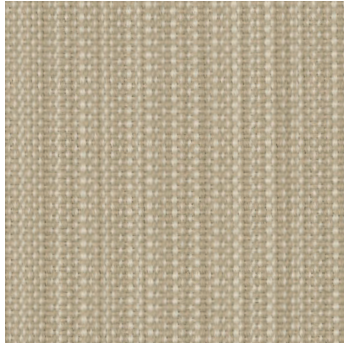
Applications: Indoor and outdoor upholstery, umbrellas, cushions, pillows

- Ultra High UV to Resist Fading
- Stain and Mildew Resistant
- Water Resistant Breathable
- Bleach Cleanable/Machine Washable
- High Abrasion Resistance
- 5 Year Warranty
- 100% American Made
- Content: 100% Solution Dyed Acrylic
- Width: 54" Wide
- Abrasion: 30,000+ to 60,000+
- Flammability: Cal. 117 Sec. 1 Class 1, Pass, NFPA 260 Class 1, Pass, IMO 8.2, Pass
- Cleaning Code: WS Bleach Cleanable



# CONTOUR

## Grace | Bone 5575



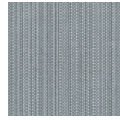
Brass 5577



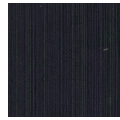
Coffee 5578



Pewter 5580



Charcoal 5582



Straw 5586



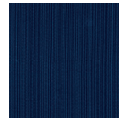
Oyster 5590



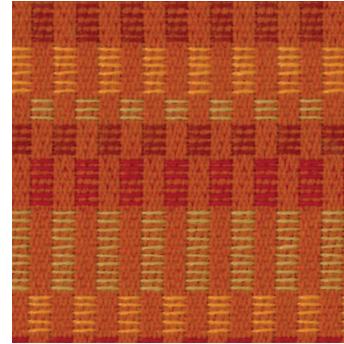
Hazelnut 5591



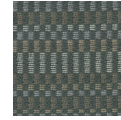
Atlantic 5595



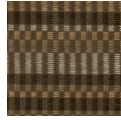
## Bolero | Melon 2275



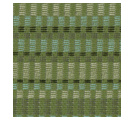
Pewter 2278



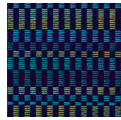
Brass 2279



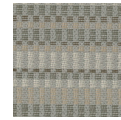
Lichen 2280



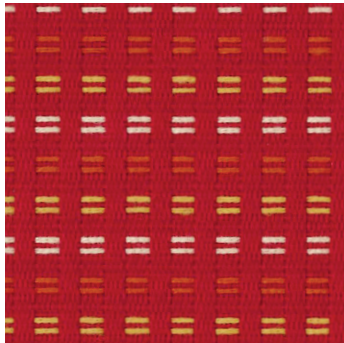
Aruba 2281



Dove 2282



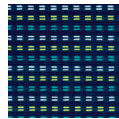
## Glory | Ruby 4076



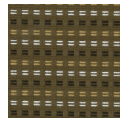
Sand 4075



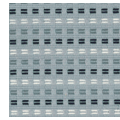
Marine 4077



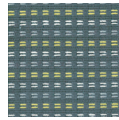
Hazelnut 4079



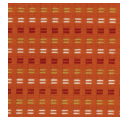
Mercury 4080



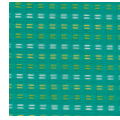
Nickel 4081



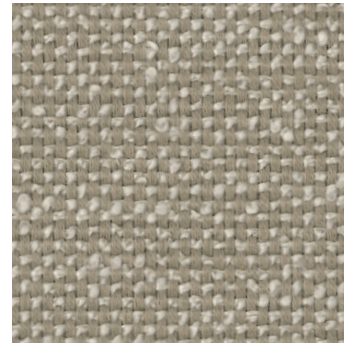
Pumpkin 4082



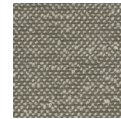
Seaglass 4084



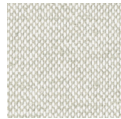
## Rumor | Bamboo 6652



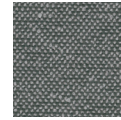
Stone 6655



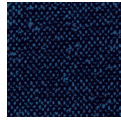
Vanilla 6667



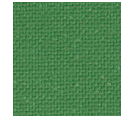
Slate 6668



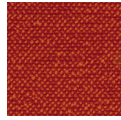
Midnight 6672



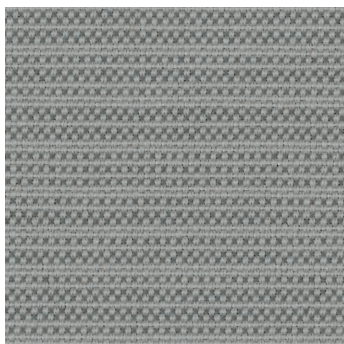
Clover 6691



Clay 6692



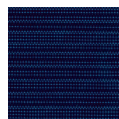
## Hawthorne | Platinum 3578



Russett 3579



Indigo 3581



Carrot 3583



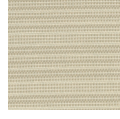
Candy Apple 3584



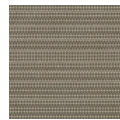
Alabaster 3585



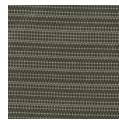
Ecru 3586



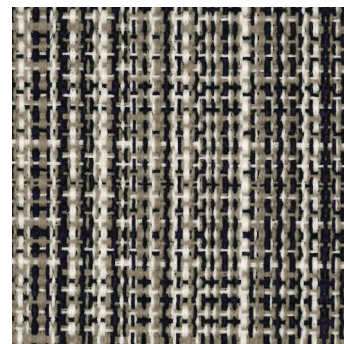
Fawn 3588



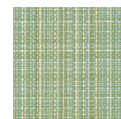
Charbrown 3590



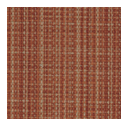
## Cadence | Granite 2401



Seamist 2403



Sienna 2409



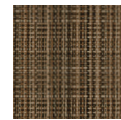
Jade 2412



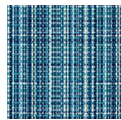
Earth 2413



Teak 2418



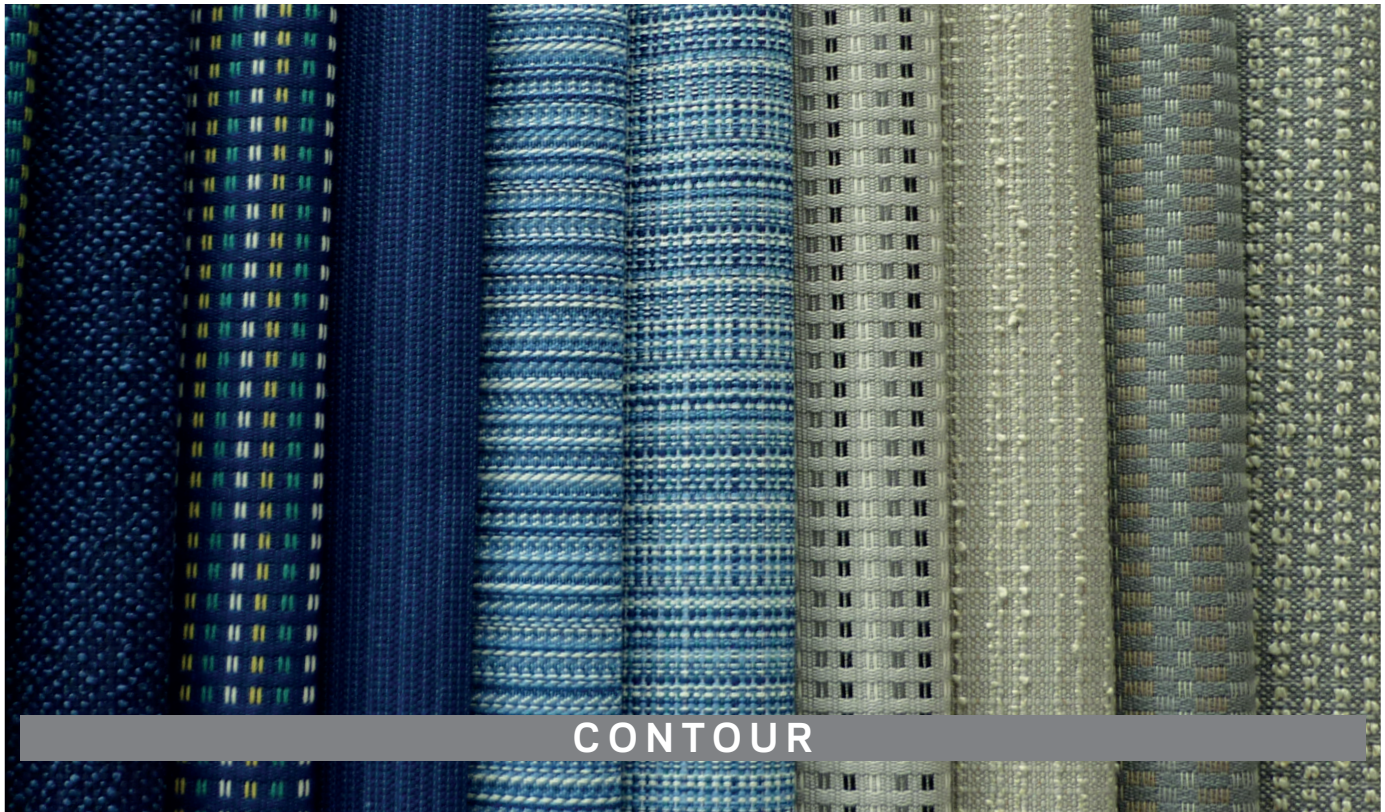
Baltic 2422



# Horizon Collection

## CONTOUR

*Changing interior environments into captivating spaces.*



: The Contour design line are great small scale patterns that can be used anywhere.

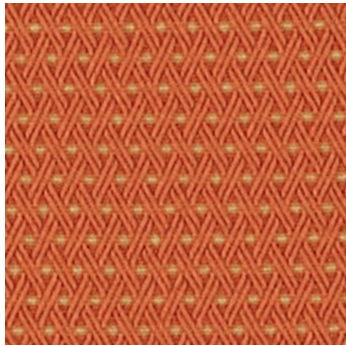
---

Applications: Indoor and outdoor upholstery, umbrellas, cushions, pillows

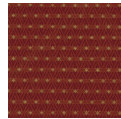
- Ultra High UV to Resist Fading
- Stain and Mildew Resistant
- Water Resistant Breathable
- Bleach Cleanable/Machine Washable
- High Abrasion Resistance
- 5 Year Warranty
- 100% American Made
- Content: 100% Solution Dyed Acrylic
- Width: 54" Wide
- Abrasion: 30,000+ to 60,000+
- Flammability: Cal. 117 Sec. 1 Class 1, Pass, NFPA 260 Class 1, Pass, IMO 8.2, Pass
- Cleaning Code: WS Bleach Cleanable

# CONTOUR

## Shimmer | Pottery 2777



Terra 2775



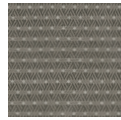
Cork 2779



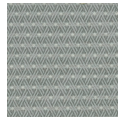
Flax 2782



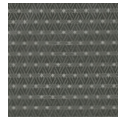
Mushroom 2783



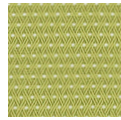
Dove 2784



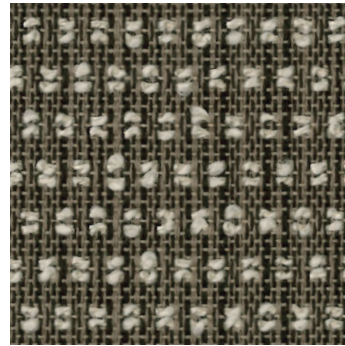
Taupe 2785



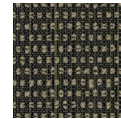
Pesto 2788



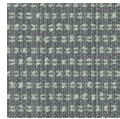
## Tucker | Earth 6977



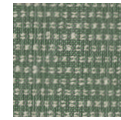
Bronze 6979



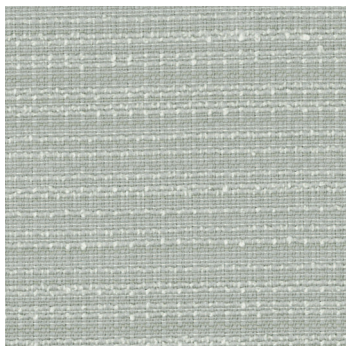
Grey 6980



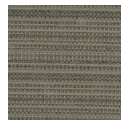
Willow 6982



## Rumba | Dove 5779



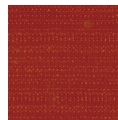
Teak 5778



Chablis 5777



Terra 5781



Ginkgo 5782



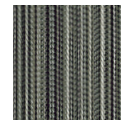
Navy 5786



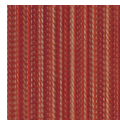
## Jinga | Beach 200J



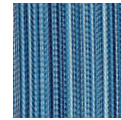
Granite 208J



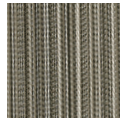
Sienna 209J



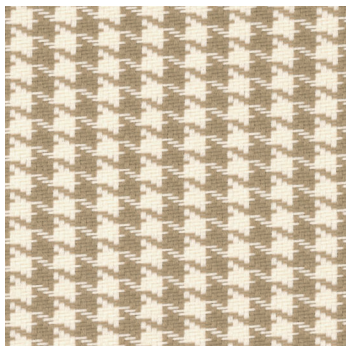
Nautical 213J



Stone 218J



## Croquet | Beach 7100



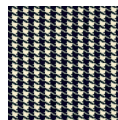
Coffee 7101



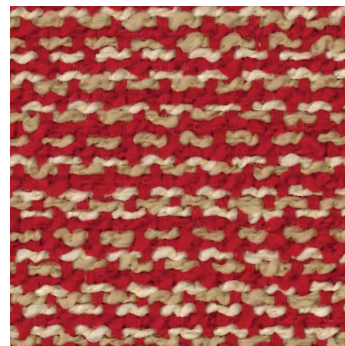
Grass 7102



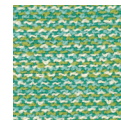
Mica 7106



## Avila | Cardinal 8380



Seaglass 8383



Pewter 8382





Toll-free: 877-963-5537  
[www.woeller.com](http://www.woeller.com)

