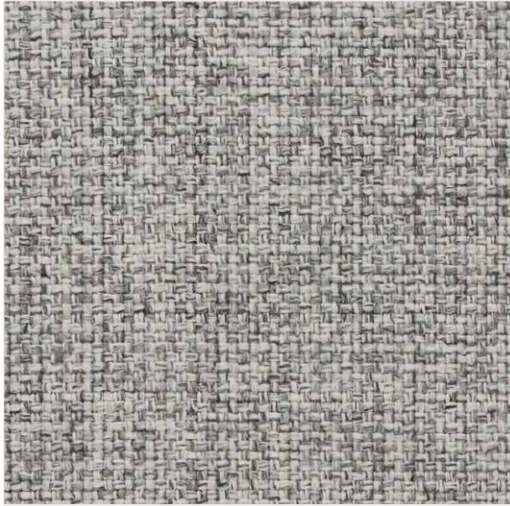


THOMPSON

High Performance
Bleach Cleanable
Liquid Barrier



GRISAILLIE 001



THE CANOE 002



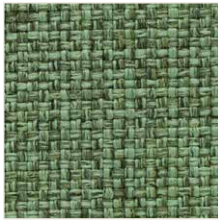
DRY BRUSH 004



WESTWIND 003



NORTHERN RIVER
005



PINE ISLAND 008



BOREAL 009



JACK PINE 010



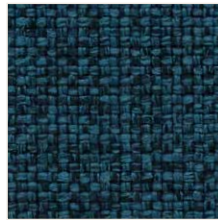
POOL 006



IMPASTO 012



UNDERTONE 013



DROWNING 011



CANOE LAKE 007



IMPRESSIONISM 014



ART NOUVEAU 015



BING INLET 016



SPIRITUAL 017



RUGGED 018



WATERFALL 019



CANADIAN SHIELD
020



OPAQUE 021

THOMPSON

High Performance
Bleach Cleanable
Liquid Barrier

Composition:	94% Polyester, 4% Polyurethane, 2% Silicone
Width:	54"
Weight:	21.5 oz/yd
Type:	Multi-coloured Texture
Abrasion Resistance:	Wyzenbeek 100,000 Double Rubs
Pilling Resistance:	ASTM D3511 Class 5.0
Flammability:	California Technical Bulletin 117:13 UFAC Class I NFPA 260
Cleaning Code:	SW & BC

	<h2>SUPREEN™</h2>	Total Liquid Barrier	Surprisingly Soft
		Environmentally Conscious	Ready for Bleach
<p>The fabric that keeps liquid out and beauty in.™</p>			

Supreen is a performance composite material that retains the beauty and luxurious softness of a woven fabric, while incorporating the performance of a coated textile. It has an incredibly supple hand, upholsters extremely well and feels wonderfully soft to the touch.

By marrying cutting-edge woven and coated technology we have created a unique liquid-barrier textile. Supreen outperforms in the places and spaces where life hits hard.

Reduced Environmental Impact

This product does not pose any exposure risks associated with the chemicals in PROP 65.

No Added Flame Retardant Chemicals – AB2998 Compliant

No Added Anti-bacterial / Anti-microbial Chemicals

Lead / Heavy Metal Free

BPA Free / TRIS Free / Formaldehyde Free

Does Not Contain Conflict Minerals



Disclaimer: This product meets the Healthy Interior goals of the Safer Chemical Challenge according to the manufacturer. Practice Greenhealth does not verify this information.



t 877-963-5537
www.woeller.com

