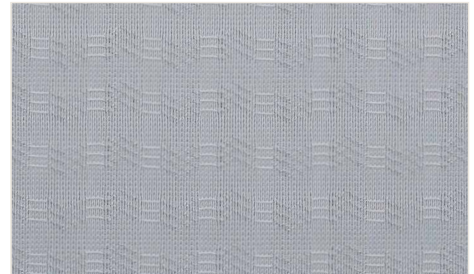


KAYLOR KUBE

INTEGRAL MESH

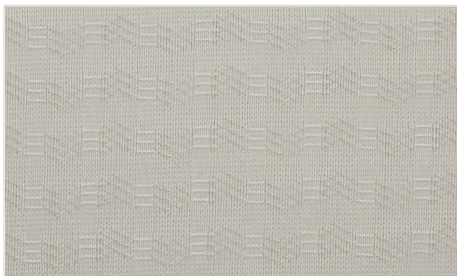
Privacy Curtain/Bedspread
FR Resistant 



008 GRAYSCALE



003 EARLY DAWN



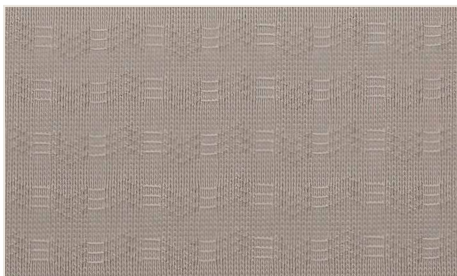
002 CLEAN KHAKI



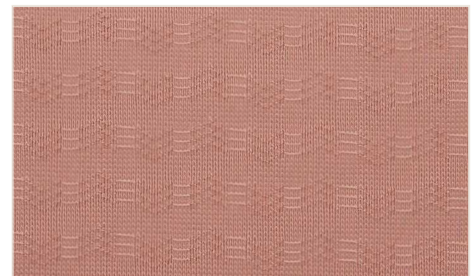
001 CLASSIC GRAY



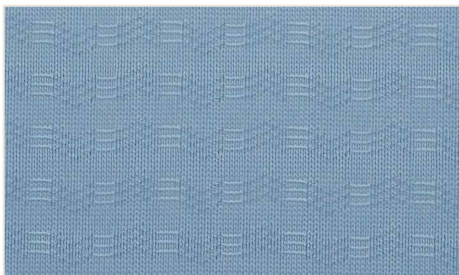
004 SHAKER BEIGE



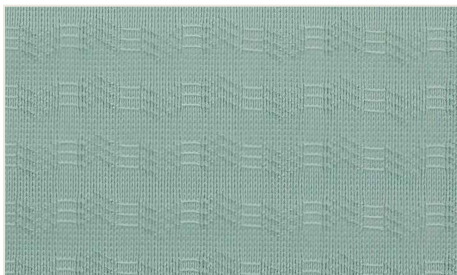
005 LIGHT TAUPE



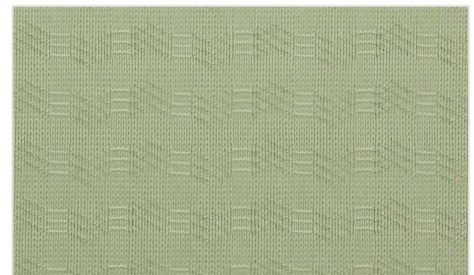
006 ISLAND CORAL



007 BLUEWATER



009 SOFT ALOE



010 POTTERY GREEN

KAYLOR KUBE

INTEGRAL MESH

Privacy Curtain/Bedsread
FR Resistant 

Content:

100% FR Polyester

Width:

Overall: 102", Header: 4",
Integral Mesh: 20", Body: 78"

Weight:

27 oz/yd

Fabricated Curtains:

Upto 98" Length Including Integral Mesh
Typical Curtain Length: 12" AFF
Recommended Fullness: 15%
Header: 1" Triple Fold
Hems: 1" Triple Fold with Loc-stitch
Grommet: #1 Nickel-plated Brass
on Center Every 6"

Flammability Test:

NFPA 701 – Passes;
CAN/ULC-S109-14 Small Flame Test;
NFPA 13 – Passes
(Sprinkler code opening exceeds
70% requirement)

Laundry:

Machine Wash to 71C
Tumble Dry at 60C
Fabric will not shrink, pill or fade
when cleaned as directed.
ASTM 03691 – Passes
(Performance Test for Washing)
AATCC test 61-198 – Passes
(Colourfast in Wash, Highest Rating)
Durable Press Appearance: 3.5 Rating
Lightfast: 60 Hours Minimum

Design:

Integral Mesh Prints
Integral Mesh Solid Colours

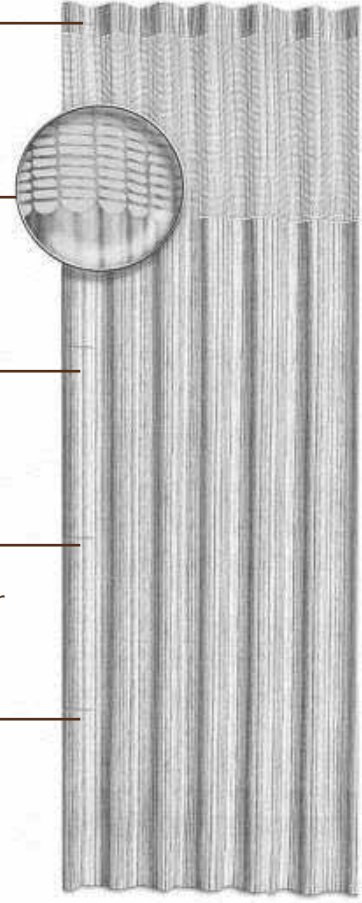
Four inch fabric header
triple folds to reinforce
grommets and ensure
superior strength.

Integral mesh construction
provides continuity of
design with life-long
code compliance.

No puckering, shrinking or
weakness with our unique
one piece construction.

Integral mesh fabric, 102"
wide, requires no repeat or
seaming, which translates
into savings.

Integral mesh retains its
shape through frequent
laundering; always hangs
and stacks beautifully.



Matching Bedsreads Available



Made in North America



Machine Washable



t 877-963-5537
www.woeller.com



 Healthier
Hospitals