

SKETCH

High Performance



GEORGIA 009



DRAPER 002



CONSTABLE 005



CADDEN 001



PRATT 003



LEO 004



EMILY 006



MAUD 008



KANE 007



HOCKNEY 020



HOBBS 021



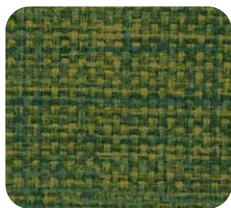
EGON 022



WYLIE 023



MOORE 014



TURNER 015



PABLO 010



VINCENT 011



MATISSE 012



ROWAN 013



BARKER 017



MONET 016



ST LOUIS 018



BETTY 019

SKETCH

High Performance

Composition:	100% Phthalate Free PVC with a brushed knit backing
Width:	54"
Weight:	30 oz/yd
Type:	Faux Leather
Abrasion Resistance:	Wyzenbeek 250,000 Double Rubs
Flammability Test:	California Technical Bulletin 117-2013 UFAC Class I NFPA 260 FMVSS 302
Cleaning Code:	WS & BC
General Cleaning:	Prompt cleaning is always recommended. Ordinary dirt and stains can be removed with mild soap and water. Rinse cleaned area with clean water and dry with a lint free cloth. Sketch will resist, without serious discolouration, the repeated actions of normal dilutions of non-abrasive chlorine or ammonia-based cleaners.
Special Note:	Stain Resistant, Abrasion Resistant, Mildew Resistant, Anti-Bacterial & Anti-Microbial.

Reduced Environmental Impact

Phthalate Free
Does not contain F/R Chemicals
Does not contain Anti-Bacterial or Anti-Microbial Chemicals
Lead Free
BPA Free/TRIS Free/Formaldehyde Free
Does not contain Conflict Minerals



t 877-963-5537
www.woeller.com

