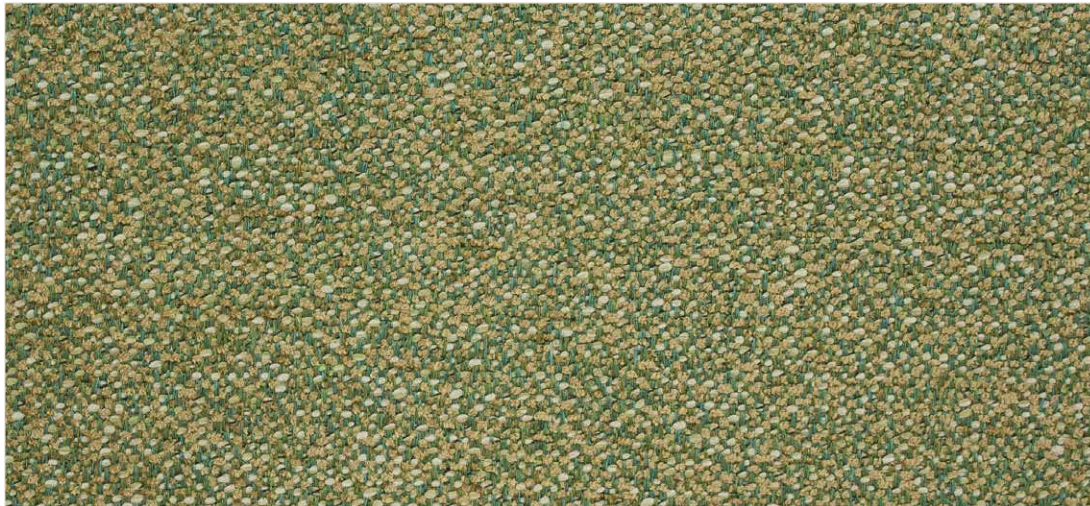
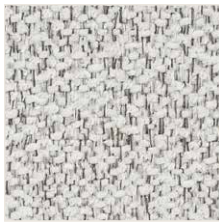


# TIMBER

High Performance Textile



WILLOW 008



FROST 001



BIRCH 002



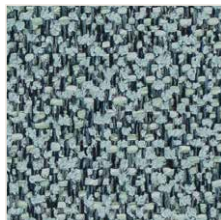
SHALE 003



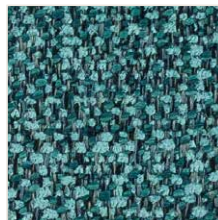
FIR 004



BALSAM 005



JACK PINE 006



SPRUCE 007



TAMARACK 011



ASH 010



PINE CONE 009



FIREWEED 013



ALDER 012



TAIGA 015



POPLAR 016



BOREAL 014



RESIN 017

# TIMBER

High Performance Textile

Composition:	100% Polyester with SRB Backing
Width:	54"
Weight:	12.0 oz/yd
Type:	Multi-colour Texture
Abrasion Resistance:	Wyzenbeek 100,000 Double Rubs
Pilling Resistance:	Class 4.5 per ASTM D3511
Flammability:	California Technical Bulletin 117 — 2013 UFAC Class I NFPA 260
Cleaning Code:	S / SW
Finish:	Stain and water repellent finish is standard. Please contact customer service for details on our optional finishes.

**alta**  CRYPTON  NANotex  + DuraBlock



**t** 877-963-5537  
[www.woeller.com](http://www.woeller.com)

