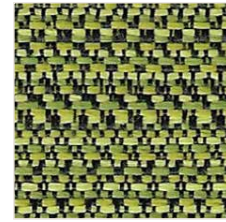
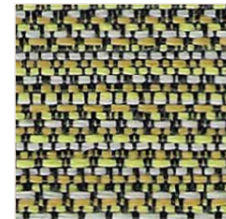


MINT 008



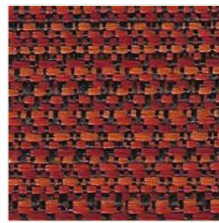
CYPRESS 007



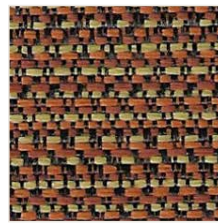
CACTUS 006



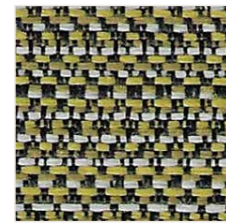
SANGRIA 005



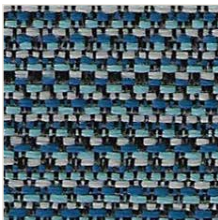
FIRECRACKER 004



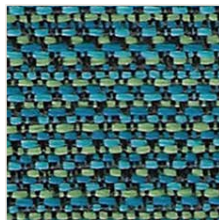
PICANTE 003



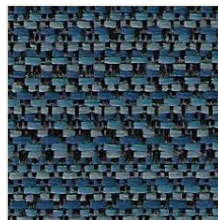
MAIZE 002



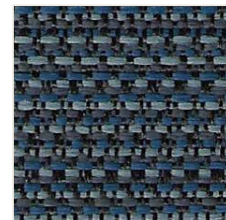
ORBIT 010



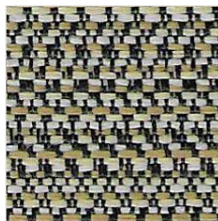
AQUATIC 009



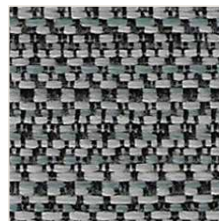
COSMIC 011



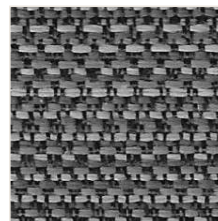
ECLIPSE 012



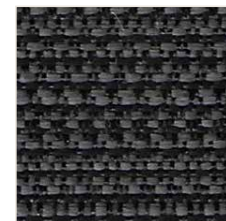
SAFARI 001



CHROMIUM 013



METEOR 014



PULSAR 015

BEAM

High Performance
Bleach Cleanable 

Composition:	65% PCR Polyester (Repreve®), 35% Polyester with Acrylic Backing (Nvirosoft™)
Width:	54"
Weight:	10.0 oz/yd
Type:	Multi-coloured Texture
Abrasion Resistance:	Wyzenbeek 100,000 Double Rubs
Pilling Resistance:	ASTM D3511 Class 5
Flammability:	California Technical Bulletin 117:2013
Cleaning Code:	WS & BC – Bleach Cleanable
Finish:	GreenShield® stain repellent finish is standard. Please contact customer service for details on our optional finishes.

  CRYPTON.  NANOTEX. +DuraBlock  HydroShield™

Environmental Attributes



This fabric contains post-consumer recycled polyester. Post consumer recycled polyester is made from recycled plastic bottles which are diverted from landfills. This reduces the environmental footprint left from processing petroleum products into virgin polyester.



REPREVE® is Unifi's brand of recycled performance yarns made from post-consumer plastic bottles



Nvirosoft™ is an eco-friendly acrylic backing which is free of all Prop 65 chemicals at the source. It combines high performance with soft and supple finish for comfort and ease of upholstery.



GreenShield® is a PFC free stain repellent finish providing superior water-repellency to water based stains. It is free of all Prop 65 chemicals at the source.

 Made in Canada



t 877-963-5537
www.woeller.com

