
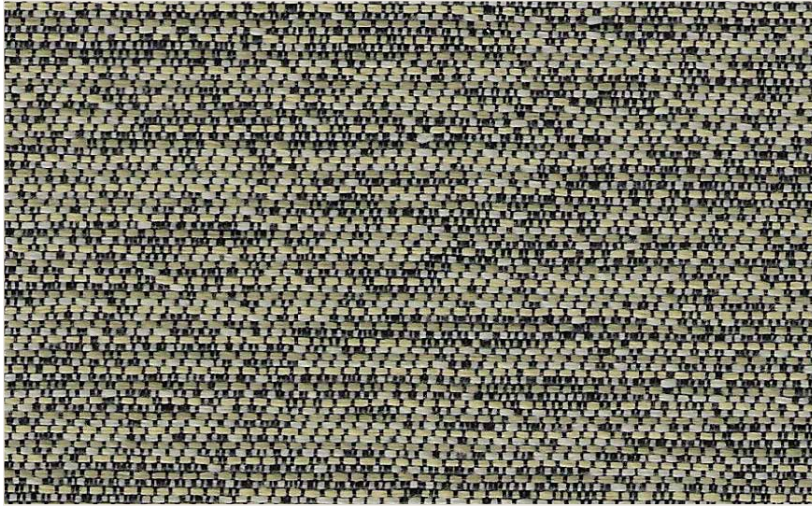
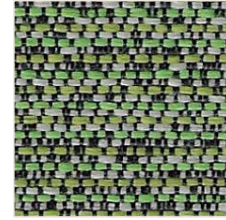


PAUSE

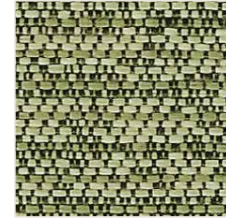
High Performance 
Bleach Cleanable



AUSPICE 001



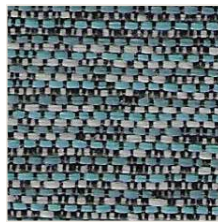
GRASS 008



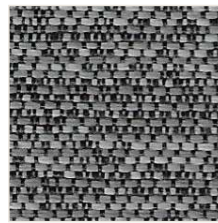
SAVANNAH 009



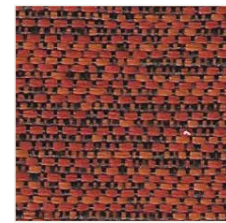
SANDALWOOD 002



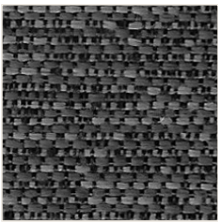
HALCYON 004



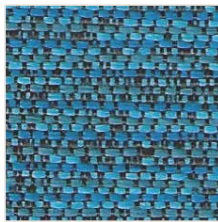
COIN 003



PERSIMMON 010



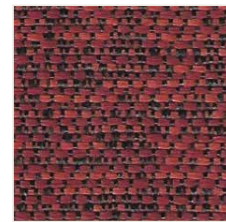
CARBON 014



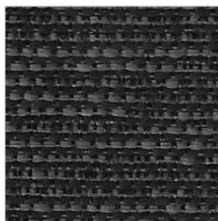
ARUBA 005



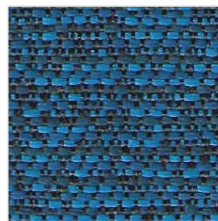
ARCTIC 007



PERINONE 011



INFINITY 015



COZUMEL 006



PHLOX 013



MAGENTA 012

PAUSE

High Performance 
Bleach Cleanable

Composition:	65% PCR Polyester (Repreve®), 35% Polyester with Acrylic Backing (Nvirosoft™)
Width:	54"
Weight:	10.0 oz/yd
Type:	Multi-coloured Texture
Abrasion Resistance:	Wyzenbeek 250,000 Double Rubs
Pilling Resistance:	ASTM D3511 Class 5
Flammability:	California Technical Bulletin 117:2013
Cleaning Code:	WS & BC – Bleach Cleanable
Finish:	GreenShield® stain repellent finish is standard. Please contact customer service for details on our optional finishes.

  CRYPTON.  NANOTEX. +DuraBlock  HydroShield™

Environmental Attributes



This fabric contains post-consumer recycled polyester. Post consumer recycled polyester is made from recycled plastic bottles which are diverted from landfills. This reduces the environmental footprint left from processing petroleum products into virgin polyester.

 REPREVE

REPREVE® is Unifi's brand of recycled performance yarns made from post-consumer plastic bottles

 Nvirosoft™

Nvirosoft™ is an eco-friendly acrylic backing which is free of all Prop 65 chemicals at the source. It combines high performance with soft and supple finish for comfort and ease of upholstery.

 GreenShield®

GreenShield® is a PFC free stain repellent finish providing superior water-repellency to water based stains. It is free of all Prop 65 chemicals at the source.

 Made in Canada



t 877-963-5537
www.woeller.com

