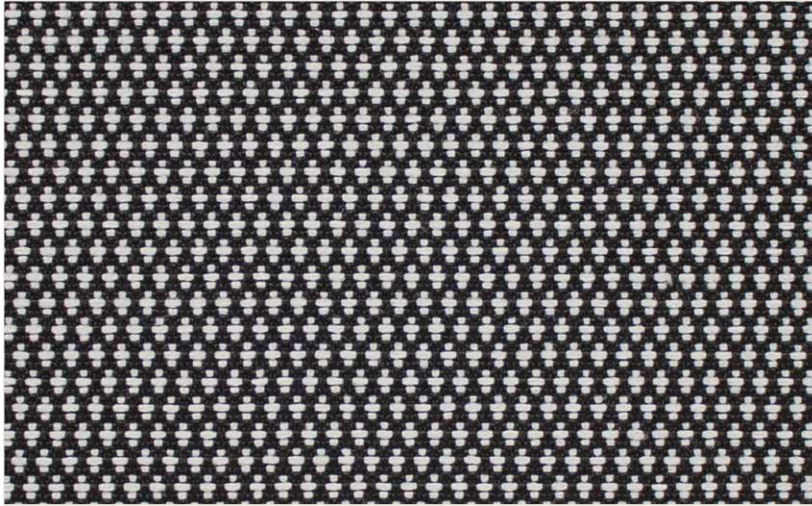


CARR

High Performance
Bleach Cleanable
Liquid Barrier



CHARCOAL ON PAPER 018



MOTHER OF
MODERN ART 001



NEGATIVE SPACE
002



HAIDA 011



FAUVISM 012



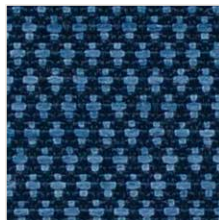
RHYTHMIC 017



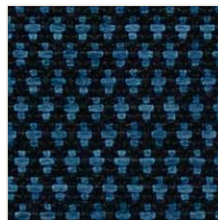
KLEE WYCK 003



INDIGENOUS 013



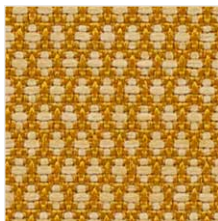
BEAR LAKE 014



PACIFIC NORTH
WEST 015



BIG RAVEN 019



REALISM 005



EXPRESSIONISM
006



RED CEDAR 007



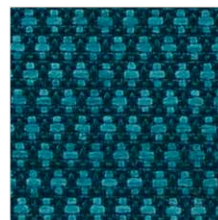
TREE TRUNK 004



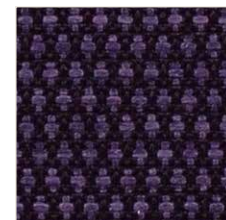
ST IVES 008



RAIN FOREST 009



TOTEM POLE 010



FIRST NATIONS 016

CARR

High Performance
Bleach Cleanable
Liquid Barrier

Composition:	90% Polyester, 8% Polyurethane, 2% Silicone
Width:	54"
Weight:	19 oz/yd
Type:	Ditsy
Abrasion Resistance:	Wyzenbeek 90,000 Double Rubs
Pilling Resistance:	ASTM D3511 Class 4.5
Hydrostatic Pressure (Suter):	270+cm (maximum) AATCC127-13
Flammability:	California Technical Bulletin 117:13 UFAC Class I NFPA 260
Cleaning Code:	SW & BC

 SUPREEN™	Total Liquid Barrier	Surprisingly Soft
	Environmentally Conscious	Ready for Bleach
The fabric that keeps liquid out and beauty in.™		

Supreen is a performance composite material that retains the beauty and luxurious softness of a woven fabric, while incorporating the performance of a coated textile. It has an incredibly supple hand, upholsters extremely well and feels wonderfully soft to the touch.

By marrying cutting-edge woven and coated technology we have created a unique liquid-barrier textile. Supreen outperforms in the places and spaces where life hits hard.

Reduced Environmental Impact

This product does not pose any exposure risks associated with the chemicals in PROP 65.

No Added Flame Retardant Chemicals – AB2998 Compliant

No Added Anti-bacterial / Anti-microbial Chemicals

Lead / Heavy Metal Free

BPA Free / TRIS Free / Formaldehyde Free

Does Not Contain Conflict Minerals



Disclaimer: This product meets the Healthy Interior goals of the Safer Chemical Challenge according to the manufacturer. Practice Greenhealth does not verify this information.



t 877-963-5537
www.woeller.com

