

JOHNSTON

High Performance
Bleach Cleanable
Liquid Barrier



CANVAS 003



THUNDERERS 001



SERENITY 002



SKETCH 017



TEMPERA 018



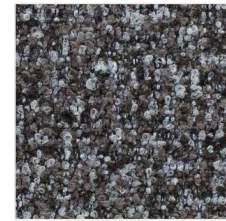
REFLECTION 004



COMMERCIAL 005



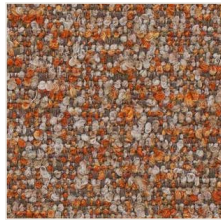
DARK WOODS 020



KLEINBURG 019



BEAMSVILLE 006



MOOSE POND 007



GRAND EYE FOR
GLORY 008



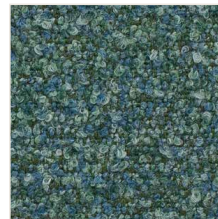
BON ECHO 009



FIRE RANGER 012



SHADOWED
VALLEY 013



ALGOMA
TAPESTRY 011



HEARST 010



EARLY EVENING 014



FRANZ 016



LAKE SUPERIOR
015



FIRE SWEPT 021

JOHNSTON

High Performance
Bleach Cleanable
Liquid Barrier

Composition:	88% Polyester, 7% Acrylic, 3% Polyurethane, 2% Silicone
Width:	54"
Weight:	24.5 oz/yd
Type:	Multi-coloured Boucle
Abrasion Resistance:	Wyzenbeek 100,000 Double Rubs
Pilling Resistance:	ASTM D3511 Class 4.5
Flammability:	California Technical Bulletin 117:13 UFAC Class I NFPA 260
Cleaning Code:	SW & BC

	SUPREEN™	Total Liquid Barrier	Surprisingly Soft
		Environmentally Conscious	Ready for Bleach
The fabric that keeps liquid out and beauty in.™			

Supreen is a performance composite material that retains the beauty and luxurious softness of a woven fabric, while incorporating the performance of a coated textile. It has an incredibly supple hand, upholsters extremely well and feels wonderfully soft to the touch.

By marrying cutting-edge woven and coated technology we have created a unique liquid-barrier textile. Supreen outperforms in the places and spaces where life hits hard.

Reduced Environmental Impact

This product does not pose any exposure risks associated with the chemicals in PROP 65.

No Added Flame Retardant Chemicals – AB2998 Compliant

No Added Anti-bacterial / Anti-microbial Chemicals

Lead / Heavy Metal Free

BPA Free / TRIS Free / Formaldehyde Free

Does Not Contain Conflict Minerals



Disclaimer: This product meets the Healthy Interior goals of the Safer Chemical Challenge according to the manufacturer Practice Greenhealth does not verify this information.



t 877-963-5537
www.woeller.com

