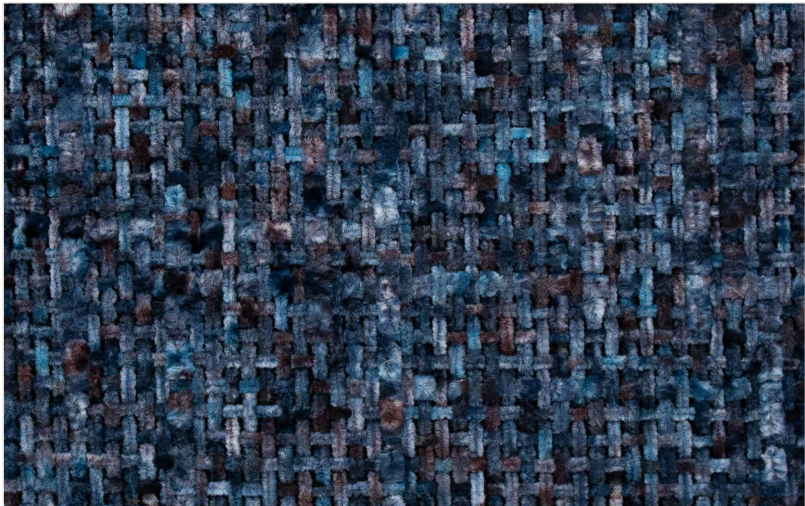


# CASSON

High Performance  
Bleach Cleanable  
Liquid Barrier



ALGOMA 008



QUIETER THAN  
QUIET 001



TWILIGHT NEAR  
BRITT 005



QUAKER 003



LITHOGRAPHY 002



APPROACHING  
STORM 009



HAMILTON 004



FOG LIFTING 006



WATERCOLOUR  
010



OCTOBER 013



BREEZY DAY 007



SUMMER  
LANDSCAPE 011




ALFRED 012

# CASSON

High Performance  
Bleach Cleanable  
Liquid Barrier

Composition:	94% Polyester, 4% TPU, 2% Silicone
Width:	54"
Weight:	18 oz/yd
Type:	Multi-coloured Chenille
Abrasion Resistance:	Wyzenbeek 100,000 Double Rubs
Pilling Resistance:	Class 5 per ASTM D3511
Flammability:	California Technical Bulletin 117:13 UFAC Class I NFPA 260
Cleaning Code:	SW & BC

 <b>SUPREEN™</b>	Total Liquid Barrier	Surprisingly Soft
	Environmentally Conscious	Ready for Bleach
The fabric that keeps liquid out and beauty in.™		

Supreen is a performance composite material that retains the beauty and luxurious softness of a woven fabric, while incorporating the performance of a coated textile. It has an incredibly supple hand, upholsters extremely well and feels wonderfully soft to the touch.

By marrying cutting-edge woven and coated technology we have created a unique liquid-barrier textile. Supreen outperforms in the places and spaces where life hits hard.

## Reduced Environmental Impact

This product does not pose any exposure risks associated with the chemicals in PROP 65.

No Added Flame Retardant Chemicals – AB2998 Compliant

No Added Anti-bacterial / Anti-microbial Chemicals

Lead / Heavy Metal Free

BPA Free / TRIS Free / Formaldehyde Free

Does Not Contain Conflict Minerals



Disclaimer: This product meets the Healthy Interior goals of the Safer Chemical Challenge according to the manufacturer Practice Greenhealth does not verify this information.



t 877-963-5537  
[www.woeller.com](http://www.woeller.com)



09|24